

BANJO FITTINGS

HFB182



HOLE	THICK	WIDTH	ANGLE	OAL	FITS
3/8"	1/2"	22.2mm	-	165mm	US

HFB188



HOLE	THICK	WIDTH	ANGLE	OAL	FITS
3/8"	12.5mm	40mm	90°	116mm	US

HFB193



HOLE	THICK	WIDTH	ANGLE	OAL	FITS
3/8"	1/2"	23mm	10°	110mm	US

HFB203



HOLE	THICK	WIDTH	ANGLE	OAL	FITS
3/8"	11mm	25mm	35°	75mm	US

HFB211



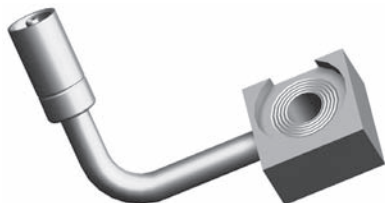
HOLE	THICK	WIDTH	ANGLE	OAL	FITS
3/8"	1/2"	22mm	-	175mm	US

HFB251



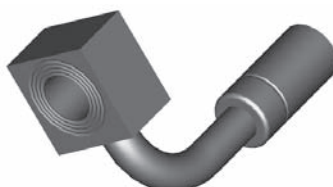
HOLE	THICK	WIDTH	ANGLE	OAL	FITS
10mm	12.6mm	19.6mm	90°	80mm	US

HFB273



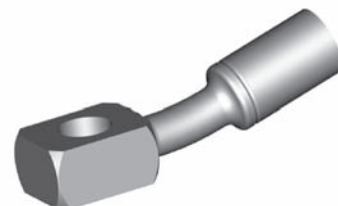
HOLE	THICK	WIDTH	ANGLE	OAL	FITS
3/8"	1/2"	28.5mm	90°	-	US

HFB276



HOLE	THICK	WIDTH	ANGLE	OAL	FITS
7/16"	14.7mm	22.2mm	90°	65mm	US

HFB309



HOLE	THICK	WIDTH	ANGLE	OAL	FITS
10mm	11.5mm	17mm	15°	62mm	V

HFB310



HOLE	THICK	WIDTH	ANGLE	OAL	FITS
10mm	11.5mm	19mm	10°	82mm	V

HFB378



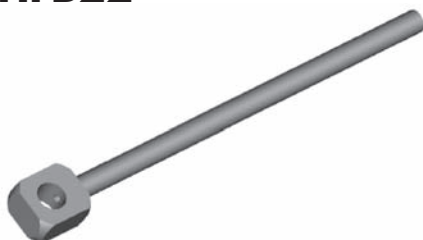
HOLE	THICK	WIDTH	ANGLE	OAL	FITS
10mm	11.6mm	17mm	45°	-	US

HFB379



HOLE	THICK	WIDTH	ANGLE	OAL	FITS
12mm	8.5mm	19mm	30°	60mm	EU

HFB22



HOLE	THICK	WIDTH	ANGLE	OAL	FITS
10mm	11.5mm	19mm	-	172mm	UNI

HFB23



HOLE	THICK	WIDTH	ANGLE	OAL	FITS
7/16"	1/2"	19mm	-	172mm	UNI

TUBE STYLE - EITHER SIDE

UNIVERSAL

A = Asian

EU = European

US = United States

UNI = Universal

V = Various