

IMPERIAL FEMALE FITTINGS

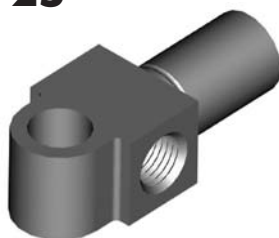
HFIF23



12mm Hole

THREAD	SEAT	MOUNT	HOLE	OAL	FITS
3/8"NF x 2	Inverted	Bolted	12mm	65mm	US

HFIF25



10mm Hole

THREAD	SEAT	MOUNT	HOLE	OAL	FITS
3/8"NF x 2	Inverted	Bolted	10mm	49mm	US

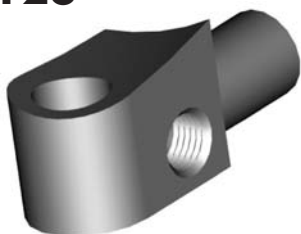
HFIF27



11.8mm Hole

THREAD	SEAT	MOUNT	HOLE	OAL	FITS
3/8"NF x 2	Inverted	Bolted	11.8mm	70mm	US

HFIF28



11.8mm Hole

THREAD	SEAT	MOUNT	HOLE	OAL	FITS
3/8"NF-7/16"NS	Inverted	Bolted	11.8mm	52mm	US

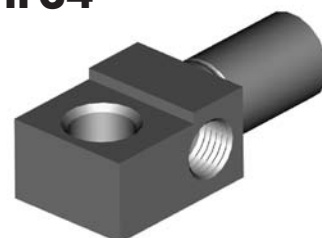
HFIF31



12mm Hole

THREAD	SEAT	MOUNT	HOLE	OAL	FITS
3/8"NF-7/16"NS	Inverted	Bolted	12mm	52mm	US

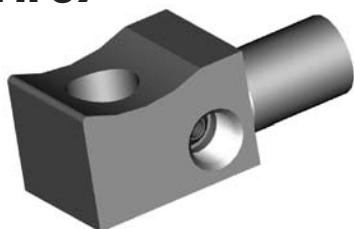
HFIF34



8/10mm Hole

THREAD	SEAT	MOUNT	HOLE	OAL	FITS
3/8"NF x 2	Inverted	Bolted	8/10mm	49mm	US

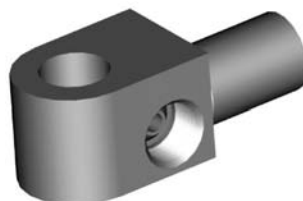
HFIF37



12mm Hole

THREAD	SEAT	MOUNT	HOLE	OAL	FITS
3/8"NF x 2	Inverted	Bolted	12mm	53mm	US

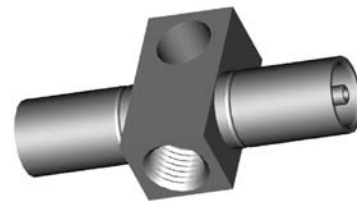
HFIF39



11.8mm Hole

THREAD	SEAT	MOUNT	HOLE	OAL	FITS
3/8"NF-7/16"NS	Inverted	Bolted	11.8mm	52mm	US

HFIF46



10mm Hole

THREAD	SEAT	MOUNT	HOLE	OAL	FITS
7/16"NS	Inverted	Bolted	10mm	60mm	US

HFIF47



12mm Hole

THREAD	SEAT	MOUNT	HOLE	OAL	FITS
3/8"NF x 2	Inverted	Bolted	12mm	50mm	US

HFIF48



11.5mm Hole

THREAD	SEAT	MOUNT	HOLE	OAL	FITS
3/8"NF-7/16"NS	Inverted	Bolted	11.5mm	53mm	US

HFIF53



11.8mm Hole

THREAD	SEAT	MOUNT	HOLE	OAL	FITS
3/8"NF x 2	Inverted	Bolted	11.8mm	53mm	US

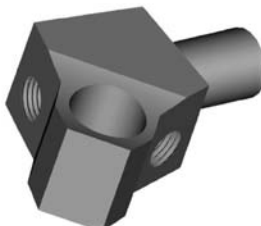
HFIF54



12mm Hole

THREAD	SEAT	MOUNT	HOLE	OAL	FITS
7/16"NS	Inverted	Bolted	12mm	51mm	US

HFIF55



15mm Hole

THREAD	SEAT	MOUNT	HOLE	OAL	FITS
3/8"NF x 2	Inverted	Bolted	15mm	58mm	US

HFIF56



11.8mm Hole

THREAD	SEAT	MOUNT	HOLE	OAL	FITS
3/8"NF x 2	Inverted	Bolted	11.8mm	55mm	US

BOLT ON MOUNT

A = Asian

EU = European

US = United States

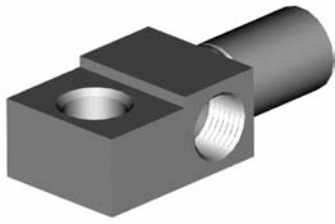
UNI = Universal

V = Various

IMPERIAL FEMALE FITTINGS

BOLT ON MOUNT

HFIF57



8/10mm Hole

THREAD	SEAT	MOUNT	HOLE	OAL	FITS
7/16"NS x 2	Inverted	Bolted	8/10mm	54mm	US

HFIF58



11.5mm Hole

THREAD	SEAT	MOUNT	HOLE	OAL	FITS
3/8"NF x 2	Inverted	Bolted	11.5mm	50mm	US

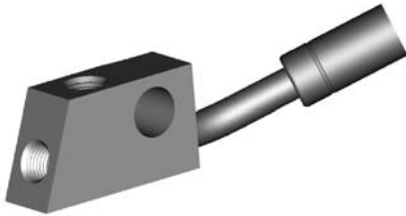
HFIF59



12mm Hole

THREAD	SEAT	MOUNT	HOLE	OAL	FITS
3/8"NF x 2	Inverted	Bolted	12mm	100mm	US

HFIF66



12mm Hole

THREAD	SEAT	MOUNT	HOLE	OAL	FITS
3/8"NF x 2	Inverted	Bolted	12mm	93mm	US

HFIF77



THREAD	SEAT	MOUNT	HOLE	OAL	FITS
1/2"NF	Inverted	Bolted	6mm	42mm	US

HFIF80



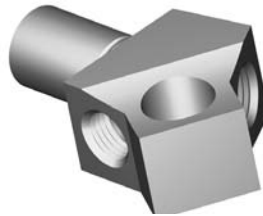
THREAD	SEAT	MOUNT	HOLE	OAL	FITS
3/8"NF x 2	Inverted	Bolted	11.8mm	52mm	US

HFIF88



THREAD	SEAT	MOUNT	HOLE	OAL	FITS
3/8"NF	Inverted	Bolted	11.6mm	51mm	US

HFIF110



THREAD	SEAT	MOUNT	HOLE	OAL	FITS
3/8"NF x 2	Inverted	Bolted	12mm	-	US

HFIF115



THREAD	SEAT	MOUNT	HOLE	OAL	FITS
7/16"NS x 2	Inverted	Bolted	12mm	57mm	US

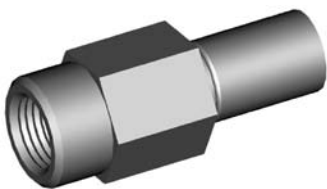
HFIF303



11.4mm Hole

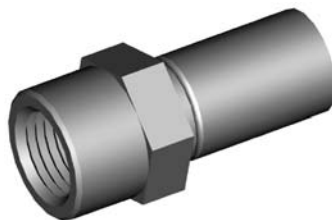
THREAD	SEAT	MOUNT	HOLE	OAL	FITS
3/8"NF-7/16"NS	Inverted	Bolted	7/16"	70mm	US

HFIF03



THREAD	SEAT	MOUNT	HEX	OAL	FITS
1/2"NF	DPS	-	19mm	50mm	US

HFIF06



THREAD	SEAT	MOUNT	HEX	OAL	FITS
1/2"NF	Inverted	-	17mm	38mm	UNI

NO MOUNT

A = Asian

EU = European

US = United States

UNI = Universal

V = Various