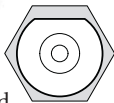


# IMPERIAL FEMALE FITTINGS

BULKHEAD MOUNT

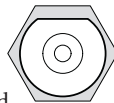
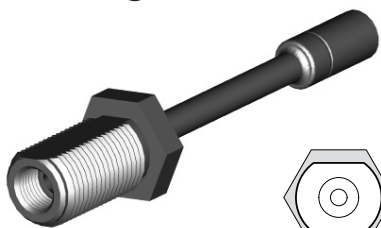
## HFIFX17



7/8NF External Thread

THREAD	SEAT	MOUNT	HEX	OAL	FITS
1/2"NF	Inverted	Bulkhead	27mm	65mm	US

## HFIFX18



7/8NF External Thread

THREAD	SEAT	MOUNT	HEX	OAL	FITS
1/2"NF	Inverted	Bulkhead	27mm	135mm	US

## HFIFX20

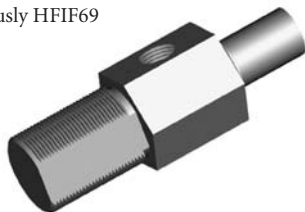


5/8NF External Thread

THREAD	SEAT	MOUNT	HEX	OAL	FITS
1/8"NPT	-	Bulkhead	19mm	45mm	US

## HFIFX21

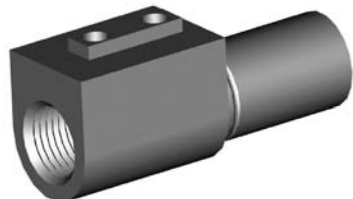
Previously HFIF69



7/8" x 18NS External Thread

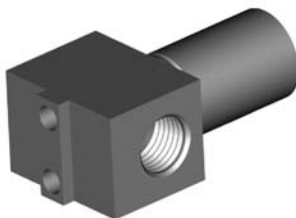
THREAD	SEAT	MOUNT	HEX	OAL	FITS
7/16"NS x 2	Inverted	Bulkhead	25mm	80mm	US

## HFIF15



THREAD	SEAT	MOUNT	HEX	OAL	FITS
3/8"NF	Inverted	Bracket	-	46mm	US

## HFIF22



THREAD	SEAT	MOUNT	HEX	OAL	FITS
3/8"NF x 2	Inverted	Bracket	-	41mm	US

## HFIF41



THREAD	SEAT	MOUNT	HEX	OAL	FITS
3/8"NF	Inverted	Bracket	-	50mm	US

BRACKET MOUNT

## HFIF42



THREAD	SEAT	MOUNT	HEX	OAL	FITS
3/8"NF	Inverted	Bracket	-	50mm	US

## HFIF44



THREAD	SEAT	MOUNT	HEX	OAL	FITS
3/8"NF x 2	Inverted	Bracket	-	50mm	US

## HFIF52



THREAD	SEAT	MOUNT	HEX	OAL	FITS
7/16"NS	Inverted	Bracket	-	46mm	US

## HFIF60



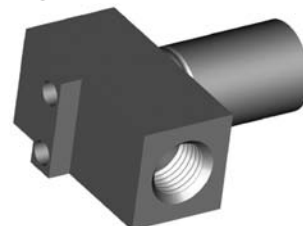
THREAD	SEAT	MOUNT	HEX	OAL	FITS
3/8"NF x 2	Inverted	Bracket	-	102mm	US

## HFIF70



THREAD	SEAT	MOUNT	HEX	OAL	FITS
3/8"NF x 2	Inverted	Bracket	-	48mm	US

## HFIF81



THREAD	SEAT	MOUNT	HEX	OAL	FITS
3/8"NF	Inverted	Bracket	-	38mm	US

A = Asian

EU = European

US = United States

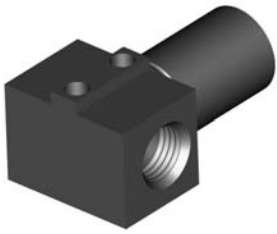
UNI = Universal

V = Various

# IMPERIAL FEMALE FITTINGS

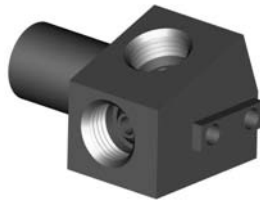
BRACKET MOUNT

## HFIF90



THREAD	SEAT	MOUNT	HEX	OAL	FITS
3/8"NF x 2	Inverted	Bracket	-	37mm	US

## HFIF109



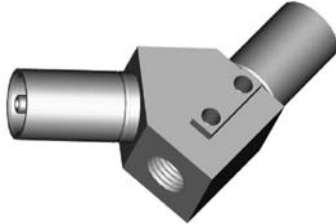
THREAD	SEAT	MOUNT	HEX	OAL	FITS
7/16"NS x 2	Inverted	Bracket	-	46mm	US

## HFIF304



THREAD	SEAT	MOUNT	HEX	OAL	FITS
3/8"NF x 2	Inverted	Bracket	-	51mm	US

## HFIF306



THREAD	SEAT	MOUNT	HEX	OAL	FITS
3/8"NF	Inverted	Bracket	-	58mm	US

## BQ71



### Bracket Retaining Screws (PKT 50)

This thread forming screw is required to secure bracket to bracket mount fittings.