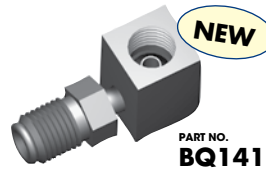


Tandem Trailer Fitting Universal (4 Way)



- 3/8" x 24NF x 4 (Inverted Seat)
- Secured by bulkhead mount (Use BQ13 bulkhead nut)
- Eliminates fittings and joins
- Any excess ports can be blanked off with a BQ19 plug

Swivel Elbow



3/8" x 24NF - 3/8" x 24NF
This handy swivel fitting is ideal for a tight 90° situation where the connection needs to be seated on an inverted seat.

Universal Mounting Bracket



Universal hole size allows most brake hoses to be securely mounted. Bracket can be screwed on, riveted or welded to frame. Rounded finish for professional looks.

Brake Hose Retaining Clip



Universal clip design secures most brake hoses to mounting surface.



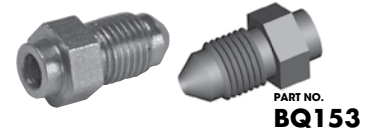
Suits Toyota vehicles.

3 Way Tee (with Bracket)



- FEATURES:**
- 3/8" x 24NF x 3 (Inverted Seat)
 - All steel construction

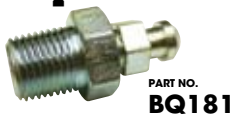
Weld On Fitting



The ultimate problem solver for connecting metal tube to hose.

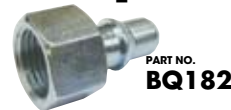
- FEATURES:**
- Universal countersink hole for 3/16" & 1/4" tube sizes
 - Popular No. 3 JIC take off point

Bleed Screw Repair Kit



This repair kit will rescue your brake component that has a stripped or broken bleed screw. Simply drill and tap to 1/8" x 27NPT thread. Works for all metals.

Transmission Line Adapters



5/8" x 18NF inverted - Straight



5/8" x 18NF inverted - 90°

Convert your push on connection transmission lines to a double flare connection. This enables you to make and repair these lines in your shop.

Copper Seat Sealer



The ideal solution for sealing damaged seats. Suitable for all 3/8" and 10mm female fitting seats.

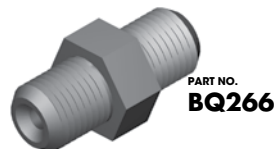
Braze-On Fitting

Part No. BQ226 Countersunk for 3/8" tube
Part No. BQ227 Countersunk for 10mm tube



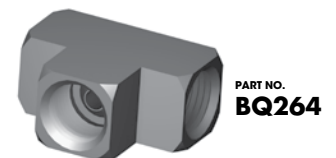
No. 6 JIC (9/16" x 18NF) male braze-on fitting for power steering tubes.

Female Hose Joiner

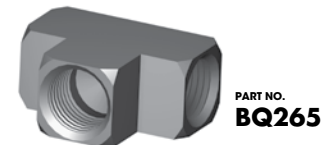


3/8" x 24NF No.3 JIC (AN)
Joins 3/8" x 24NF female fittings – universal design for both seat types.

3-Way Tees



3/8" x 24NF x (3) inverted seat
Compact steel fitting for joining 3 lines.



3/8" x 24NF x (2) inverted seat
1/8" x 27NPT x (1)
Compact steel fitting for installing brake pressure switch into system.