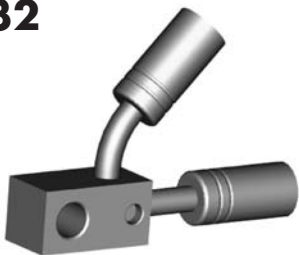


MISCELLANEOUS HOSE FITTINGS

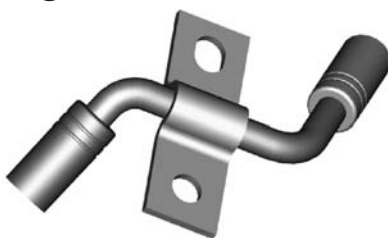
HF32



8.75mm Hole

THREAD	FLARE	TUBE SIZE	OAL	FITS
-	-	1/4"	75mm	A

HF37



THREAD	FLARE	TUBE SIZE	OAL	FITS
-	-	8mm	86mm	A

HF38



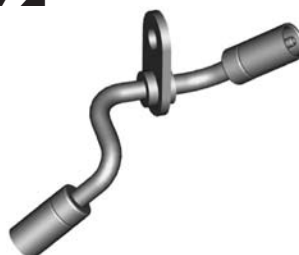
THREAD	FLARE	TUBE SIZE	OAL	FITS
-	-	8mm	86mm	A

HF71



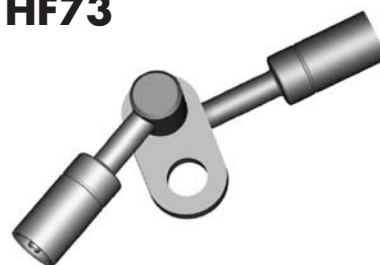
THREAD	FLARE	TUBE SIZE	OAL	FITS
-	-	7mm	130mm	A

HF72



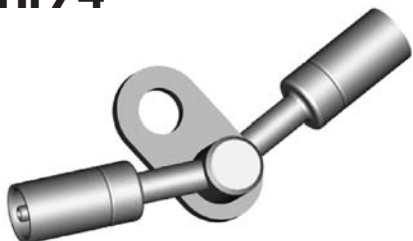
THREAD	FLARE	TUBE SIZE	OAL	FITS
-	-	7mm	130mm	A

HF73



THREAD	FLARE	TUBE SIZE	OAL	FITS
-	-	7mm	95mm	A

HF74



THREAD	FLARE	TUBE SIZE	OAL	FITS
-	-	7mm	95mm	A

HF300



THREAD	FLARE	TUBE SIZE	OAL	FITS
-	-	8mm	190mm	US

HF301



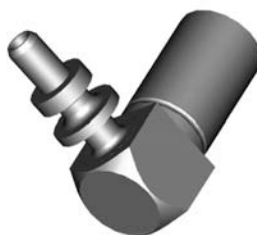
THREAD	FLARE	TUBE SIZE	OAL	FITS
-	-	8mm	190mm	US

HF35



THREAD	FLARE	TUBE SIZE	OAL	FITS
-	-	-	43mm	US

HF62



THREAD	FLARE	TUBE SIZE	OAL	FITS
-	-	-	35mm	US

HF83



O-Ring Included

THREAD	FLARE	TUBE SIZE	OAL	FITS
-	-	-	35mm	US

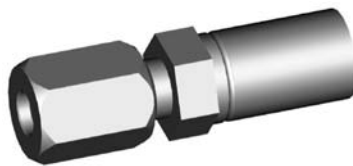
HF30



For 3/16" Tube

THREAD	FLARE	TUBE SIZE	OAL	FITS
-	-	3/16"	48mm	UNI

HF31



For 1/4" Tube

THREAD	FLARE	TUBE SIZE	OAL	FITS
-	-	1/4"	51mm	UNI

CENTER JOINER

CLUTCH SPECIAL

COMPRESSION

A = Asian

EU = European

US = United States

UNI = Universal

V = Various